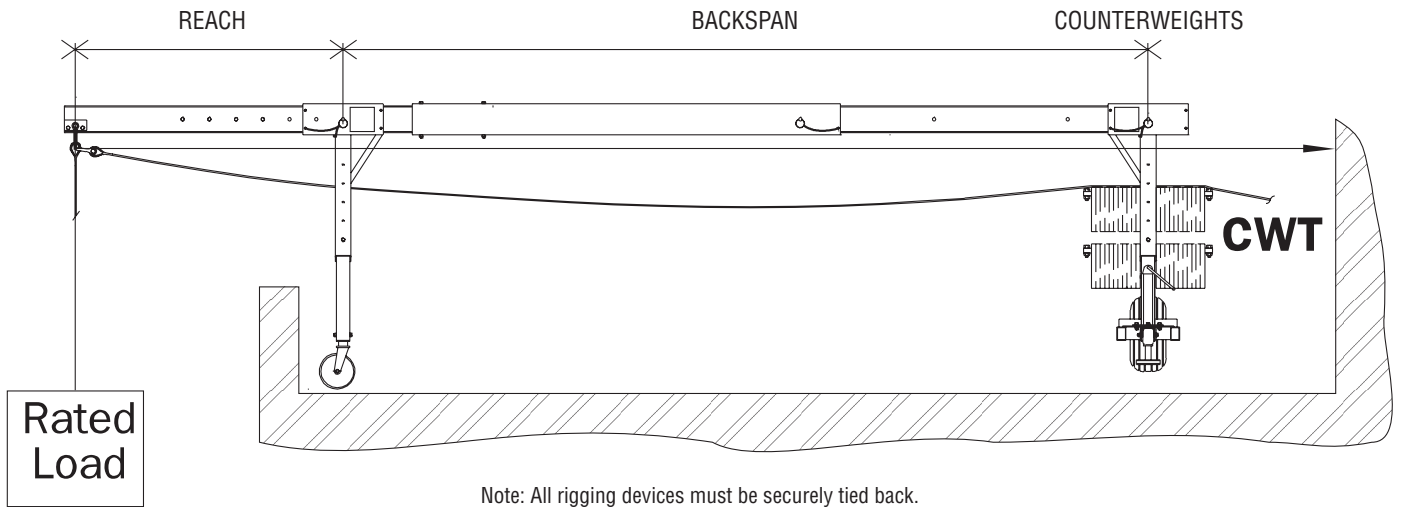


# Counterweight Formula



$$\text{Counterweights} = \frac{(4) \times (\text{Rated hoist capacity}) \times (\text{Reach})}{(\text{Backspan})}$$

**Labels on all Spider devices requiring counterweights provide actual number of 50 lb. (22.7 kg) weights needed or total counterweight required for each reach. No guesses. No math!**

**Consult your Spider professional for custom-engineered rigging solutions**

**Call or click for more information**  
**1-877-774-3370**  
**[www.spiderstaging.com](http://www.spiderstaging.com)**